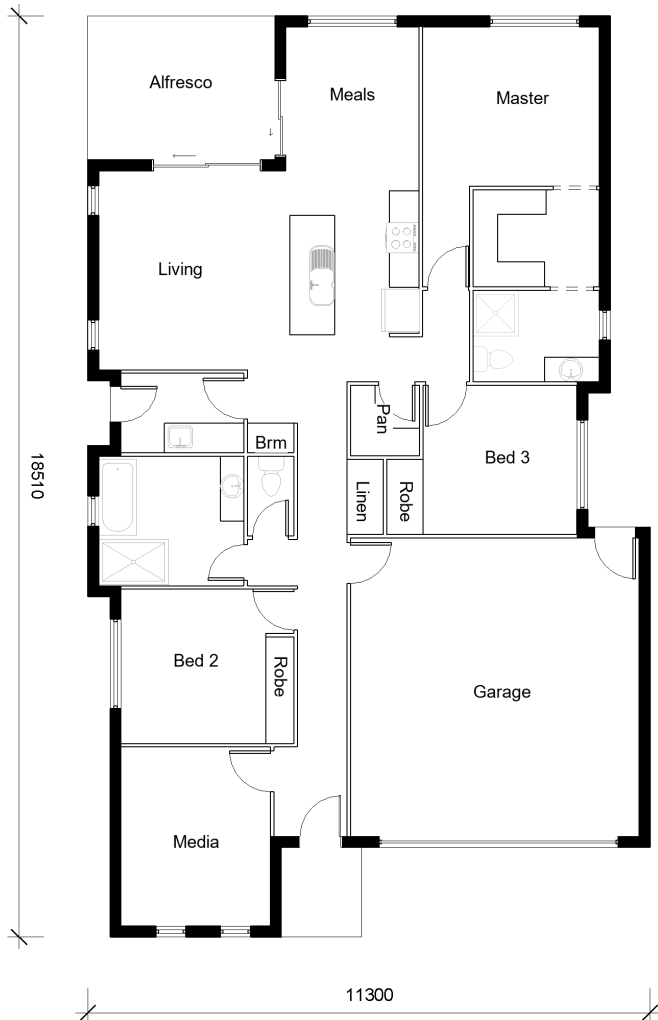


IVY 185



3



2



2

Bedrooms

Master: 3.2m X 3.3m
Bed 2: 3.1m X 3.0m
Bed 3: 2.9m X 3.0m

Other Areas

Living: 4.0m X 3.8m
Media: 3.6m X 3.0m
Meals: 2.6m X 3.2m
Kitchen: 2.6m X 2.8m
Garage: 5.8m X 6.0m

House Dimensions

Floor: 171m²
Alfresco: 11.11m²
Portico: 2.92m²
Total Area: 185.2m²
House Width: 18.5m
House Length: 11.3m

Murray Griffith

0407 230 367

murray@djroberts.com.au

djroberts.com.au

Images in this brochure may depict fixtures, finishes and features that are not included in our standard inclusions list. For detailed house pricing please talk to a sales consultant. Dimensions are approximate, please speak to a consultant.