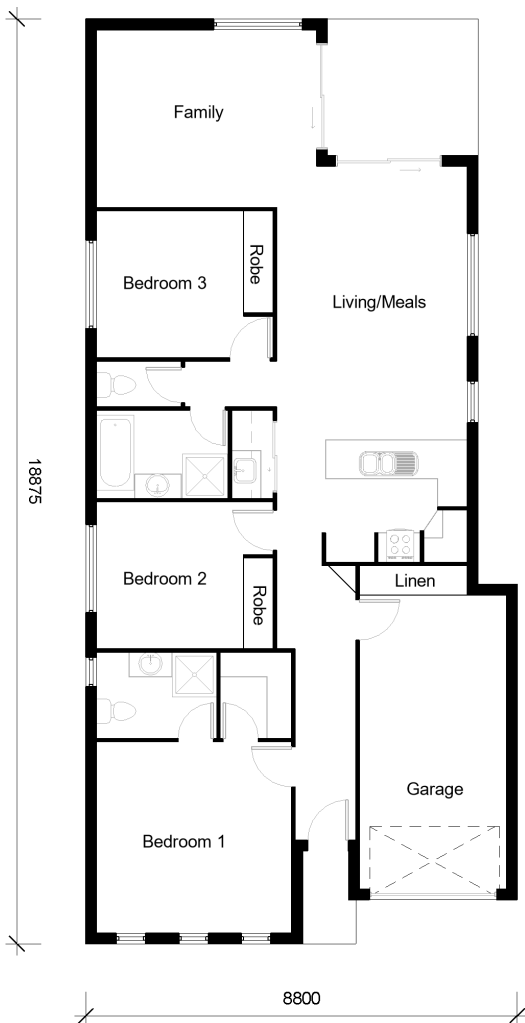


# DUNE 155



3



2



1

## Bedrooms

**Bed 1:** 3.9m X 3.9m  
**Bed 2:** 3.0m X 3.0m  
**Bed 3:** 3.0m X 3.0m

## Other Areas

**Living/Meals:** 5.5m X 3.8m  
**Family:** 3.6m X 4.4m  
**Kitchen:** 2.5m X 2.8m  
**Garage:** 3.0m X 3.6m

## House Dimensions

**Floor:** 143m<sup>2</sup>  
**Alfresco:** 9m<sup>2</sup>  
**Portico:** 3m<sup>2</sup>  
**Total Area:** 155m<sup>2</sup>  
**House Width:** 8.8m  
**House Length:** 18.8m

**Murray Griffith**

**0407 230 367**

[murray@djroberts.com.au](mailto:murray@djroberts.com.au)

[djroberts.com.au](http://djroberts.com.au)

Images in this brochure may depict fixtures, finishes and features that are not included in our standard inclusions list. For detailed house pricing please talk to a sales consultant. Dimensions are approximate, please speak to a consultant.