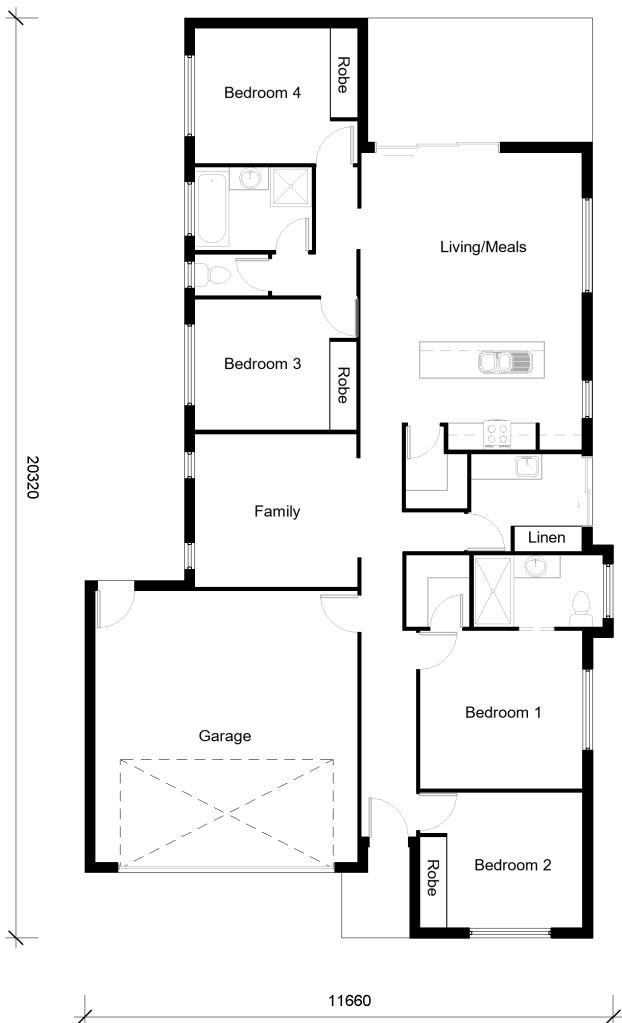


# MOFFAT 2



4



2



2

## Bedrooms

<b>Bed 1:</b>	3.5m X 3.6m
<b>Bed 2:</b>	2.9m X 3.6m
<b>Bed 3:</b>	3.0m X 3.6m
<b>Bed 4:</b>	3.0m X 3.6m

## Other Areas

<b>Family:</b>	3.4m X 3.6m
<b>Living/Meals:</b>	4.9m X 4.1m
<b>Kitchen:</b>	2.4m X 3.5m
<b>Garage:</b>	5.8m X 6.0m

## House Dimensions

<b>Floor:</b>	176.0m <sup>2</sup>
<b>Alfresco:</b>	13.0m <sup>2</sup>
<b>Portico:</b>	3.0m <sup>2</sup>
<b>Total Area:</b>	192.0m <sup>2</sup>
<b>House Width:</b>	11.6m
<b>House Length:</b>	20.3m

**Murray Griffith**

**0407 230 367**

murray@djroberts.com.au

[djroberts.com.au](http://djroberts.com.au)

Images in this brochure may depict fixtures, finishes and features that are not included in our standard inclusions list. For detailed house pricing please talk to a sales consultant. Dimensions are approximate, please speak to a consultant.