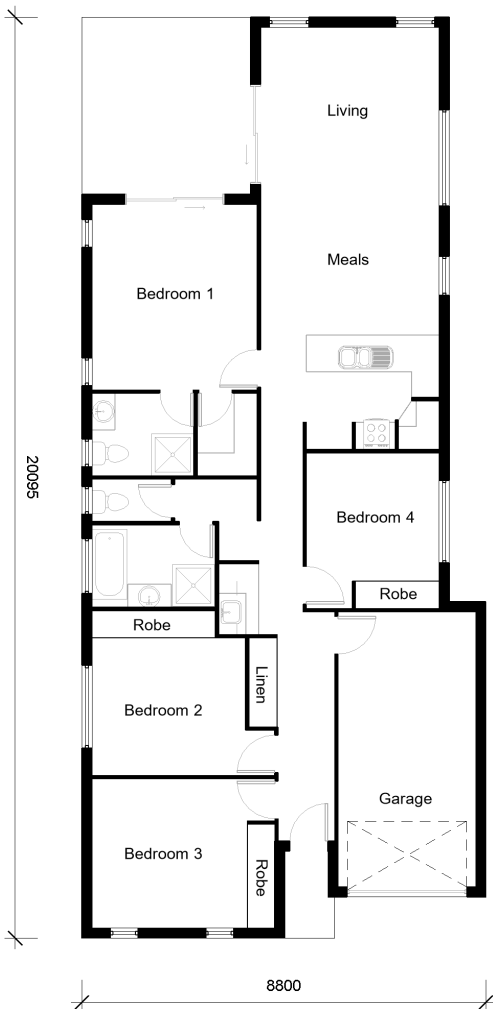


JASPER 165



4



2



1

Bedrooms

Bed 1:	4.0m X 3.6m
Bed 2:	3.0m X 3.0m
Bed 3:	3.2m X 3.3m
Bed 4:	2.8m X 2.8m

Other Areas

Living/Meals:	3.8m X 6.7m
Kitchen:	2.5m X 2.8m
Garage:	3.0m X 3.6m

House Dimensions

Floor:	148m ²
Alfresco:	14m ²
Portico:	3m ²
Total Area:	165m ²
House Width:	8.8m
House Length:	20.1m

Murray Griffith

0407 230 367

murray@djroberts.com.au

djroberts.com.au

Images in this brochure may depict fixtures, finishes and features that are not included in our standard inclusions list. For detailed house pricing please talk to a sales consultant. Dimensions are approximate, please speak to a consultant.