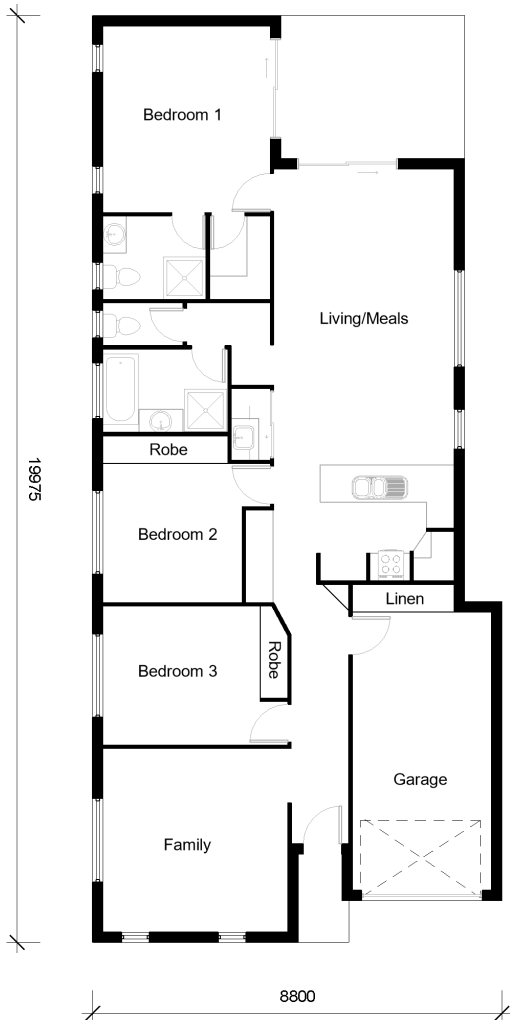


CEDAR 165



3



2



1

Bedrooms

Bed 1: 4.0m X 3.6m
Bed 2: 3.0m X 3.0m
Bed 3: 3.0m X 3.3m

Other Areas

Living/Meals: 6.3m X 3.8m
Family: 3.9m X 3.9m
Kitchen: 2.5m X 2.8m
Garage: 3.0m X 6.0m

House Dimensions

Floor: 149m²
Alfresco: 12m²
Portico: 3m²
Total Area: 164m²
House Width: 8.8m
House Length: 19.9m

Murray Griffith

0407 230 367

murray@djroberts.com.au

djroberts.com.au

Images in this brochure may depict fixtures, finishes and features that are not included in our standard inclusions list. For detailed house pricing please talk to a sales consultant. Dimensions are approximate, please speak to a consultant.